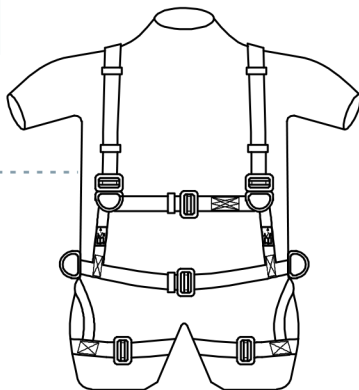
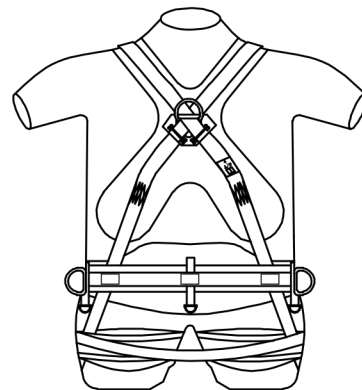


Safety Harness

MODEL **EDGE 1**



FRONT



BACK



DESIGN	<ul style="list-style-type: none"> One dorsal attachment D-ring and Two chest attachment D-rings Two lateral D-ring for work positioning Fully adjustable shoulder, thigh and chest strap Comfortable shoulder, thigh and waist pad for day long comfort 	
TYPE	Class A, P & L	
COLOUR	Black & Yellow	
WEBBING	Material	▶ Polyester
	Width	▶ 44± 1mm
	Breaking strength	▶ 20 kN (Min).
STITCHING THREAD	Material	▶ High-tenacity polyamide.
	Colour	▶ white
METAL COMPONENTS	Material	▶ High strength steel.
	Plating	▶ Zinc Plated (Thickness- 8 micron)
	Finish	▶ Shot Blasted
VITAL TEST COMPLIANCE	Static Strength	▶ 15 kN or 1,530 kgf for 3 Minutes at each attachment element.
	Dynamic strength	▶ Free fall from 1.8 meters height donned to a test dummy weighing 100 kg at each attachment element.
WEIGHT	2 kg	
STANDARD	EN 361 - EN 358 - EN 813	
MARKING	Logo ♦ Manufacturer's Name ♦ Address Model No. ♦ Type ♦ Year Of Mfg. ♦ Approval	