

TECHNICAL DATA SHEET

Product Name	DCP (ABC) TYPE FIRE EXTINGUISHER (Stored Pressure)				
Model Number	STP-ABC-1	STP-ABC-2	STP-ABC-4	STP-ABC-6	STP-ABC-9
Description	These extinguishers come with a nominal charge of 1 Kg, 2 Kg, 4 Kg, 6 Kg, or 9 Kg DRY CHEMICAL POWDER (MAP 40%/50%/90%) UL Listed agent. Constructed from 1.5 mm MS Sheet, they feature a brass forged discharge valve with an MS lever.				



DIMENSIONS

Diameter (±10)	86 mm	108 mm	140 mm	160 mm	180 mm
Height (±10)	300 mm	320 mm	500 mm	520 mm	550 mm
Sheet Thickness	1.5 mm				
Full Weight (Approx)	2.2 Kg	3.5 Kg	6.5 Kg	9.5 Kg	13 Kg

ANTI-CORROSIVE TREATMENT

Treatment	Phosphate Treatment followed by epoxy powder coating of body; DFT ≤50 microns
-----------	---

MISCELLANEOUS

Inspection & Testing	As per approved QAP
Approvals	BIS/PED
Marking	IS 15683:2018
Finish	PO Red (IS: 5 (Shade 538))
Refill & Care	IS 2190
Packing	Corrugated boxes
Included in the Box	Wall mounting bracket

DESIGN DATA

GENERAL INFORMATION

Type	Stored Pressure				
Capacity	1 Kg	2 Kg	4 Kg	6 Kg	9 Kg
Fire Rating	1A:21B	2A:55B	4A:144B	6A:233B	6A:233B
Certification	CE/EN3/IS15683				

MATERIAL OF CONSTRUCTION

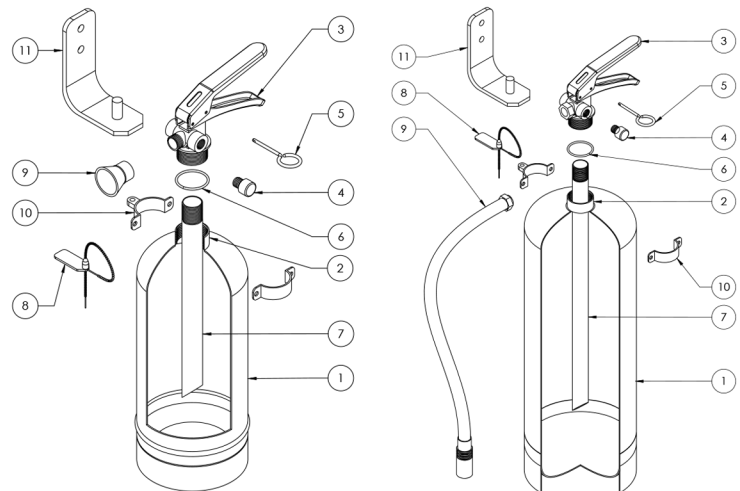
Ext. Medium	MAP (40%/50%/90%), UL Listed, IS 4308:2019
Propellant	Nitrogen
Body	Mild Steel Sheet (IS 513)
Neck Ring	MS Pipe, M30x1.5 Female threaded
Siphon Tube (Inlet/Outlet)	PVC/Aluminium
Valve	Brass, M30×1.5 Male threaded
P. Gauge/Indicator	IS 15683:2018
Discharge Hose with Nozzle	Rubber braided EPDM hose with PVC nozzle (Burst pressure ≥55 bar)
Mounting Bracket	MS Powder Coated / Chrome Plated

PERFORMANCE DATA

Eff. Discharge Time	≥8 Sec	≥9 Sec	≥15 Sec
Discharge Range	≥2 m		
% of Discharge	≥85%		
Temperature Range	-20° to 60°C	-30° to 60°C	
WP (Max)	15 bar		
Service P. (Max)	18 bar		

ROUTINE TESTS

Hydro Pressure (Pt)	35 bar (3.5 MPa), Hold: 150 Sec
Burst Pressure (Pb)	55 bar (5.5 MPa), Hold: 60 Sec
Leakage Test	Inverted glass jar / Soap solution
Type Tests	IS 15683:2018



- | | |
|-------------------------------|------------------------------|
| 1. Cylinder | 7. Siphon Tube |
| 2. Neck Ring | 8. Seal |
| 3. Valve | 9. Nozzle / Hose With Nozzle |
| 4. Pressure Gauge / Indicator | 10. Clamp |
| 5. Safety Pin | 11. Wall Mounting Bracket |
| 6. "O" Ring | |

DISCLAIMER: The images, drawings, and data in this data sheet are for reference purposes only and may change without notice. Intime Fire Appliances Pvt. Ltd. is not responsible for their use or accuracy unless explicitly stated. All trademarks, service marks, logos, images, and CAD drawings in this document belong to their respective owners, and unauthorized use is strictly prohibited.

MANUFACTURED IN INDIA BY INTIME FIRE APPLIANCES PVT. LTD. © 1998-2025. ALL RIGHTS RESERVED.



THADHANI®
The Experts in Safety... Since 1947

J.THADHANI & CO.

New #12/ Old #28, Stringers Street,
Chennai - 600001, Tamilnadu, India.



044 - 4262 5223



info@thadhanisafety.com



www.thadhanisafety.com