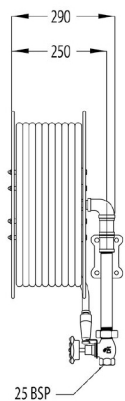
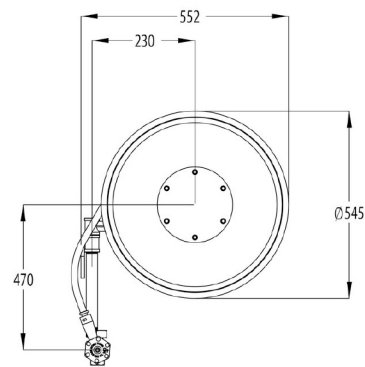


Red Emperor[®] G Series Premium Swing Fire Hose Reel LH/RH with Fixed Waterway 36m - Red

Product Code: 382523



Features

- Commercial grade quality and fully backed by our industrial warranty
- Certified to AS/NZS 1221
- 1 year warranty when installed and commissioned in accordance with AS 2441
- Test pressure: 1700kPa
- Maximum working pressure: 1200kPa
- Spray distance approximately 7 metres
- Minimum discharge at 220k ± 10 kPa inlet pressure should be 30l/min
- Nominal hose diameter: 19mm
- Hose reel length: 36 metres
- Fire Hose Reels come supplied with:
 - A fitted Brass Fire Hose Reel Nozzle Type 1 (Jet) and a brass ball valve to ensure long life and durability.
 - Side plates that are made from tough powder coated zincalume steel (per AS 4506).
- Cabinets to suit are available to purchase separately



AS/NZS 1221
Lic. SMK0376

Spare Parts

- **383455** Red Emperor® Fire Hose Reel Main Spindle with O-Rings and Circlips
- **383638** Spare Parts Kit for All Fire Hose Reels



Environmental Sustainability

We are ISO 14001 certified and take sustainability seriously. Our products are environmentally responsible designed to be healthier for users, save water and/or energy, and minimise carbon footprint. Our target is to reduce our carbon footprint by 25%, and the use of non-recyclable/non-compostable materials across the company (e.g. plastics) by 50%.

Warranty

Galvin Engineering products are covered under our Manufacturer's Warranty. Galvin Engineering products must be installed in accordance with the installation instructions and in accordance with AS 3500 and NCC Volume Three, relevant Australian Standards and local authorities applicable to product being installed. Water and electrical supply conditions must also comply to the applicable national and/or state standards, failing to comply with these provisions may void the product warranty and affect performance of the product.




Please visit www.galvinengineering.com.au to view the full warranty, our Installation Compliance and Maintenance & Cleaning information as well as any other additional information.

While all reasonable care has been taken in compiling the information in this document, the designs, dimensions and products shown are indicative only and should not be relied upon without our prior approval. Due to our policy of continuous development, we reserve the right to alter any details of specifications or products without notice. All information, drawings, technical specifications and product designs remain the property of Galvin Engineering Pty Ltd.



J.THADHANI & CO.

New #12/ Old #28, Stringers Street,
Chennai - 600001, Tamilnadu, India.

 044 - 4262 5223
 info@thadhanisafety.com
 www.thadhanisafety.com