

TECHNICAL DATASHEET OF  
GUN METAL LANDING VALVE TYPE-A



**GM Fire Fighting Hydrant Valves Single Control**

<b>Size</b>	<b>63 MM</b>
<b>Reference Standard</b>	<b>IS : 5290 TYPE- A</b>
<b>Material of Construction</b>	<b>Gun Metal TO IS 318 LTB-II</b>
<b>Inlet</b>	<b>Flanged And Drilling as per IS 1538 / ANSI B 16.5 # 150 / As Per Client Requirement</b>
<b>Outlet</b>	<b>Instantaneous Pull out Type Female Outlet</b>
<b>Finish</b>	<b>Body Fire Red colored Hand Wheel Black Painted</b>
<b>Approval</b>	<b>BIS</b>



**THADHANI**<sup>®</sup>  
The Experts in Safety... Since 1947

**J.THADHANI & CO.**

New #12/ Old #28, Stringers Street,  
Chennai - 600001, Tamilnadu, India.



044 - 4262 5223



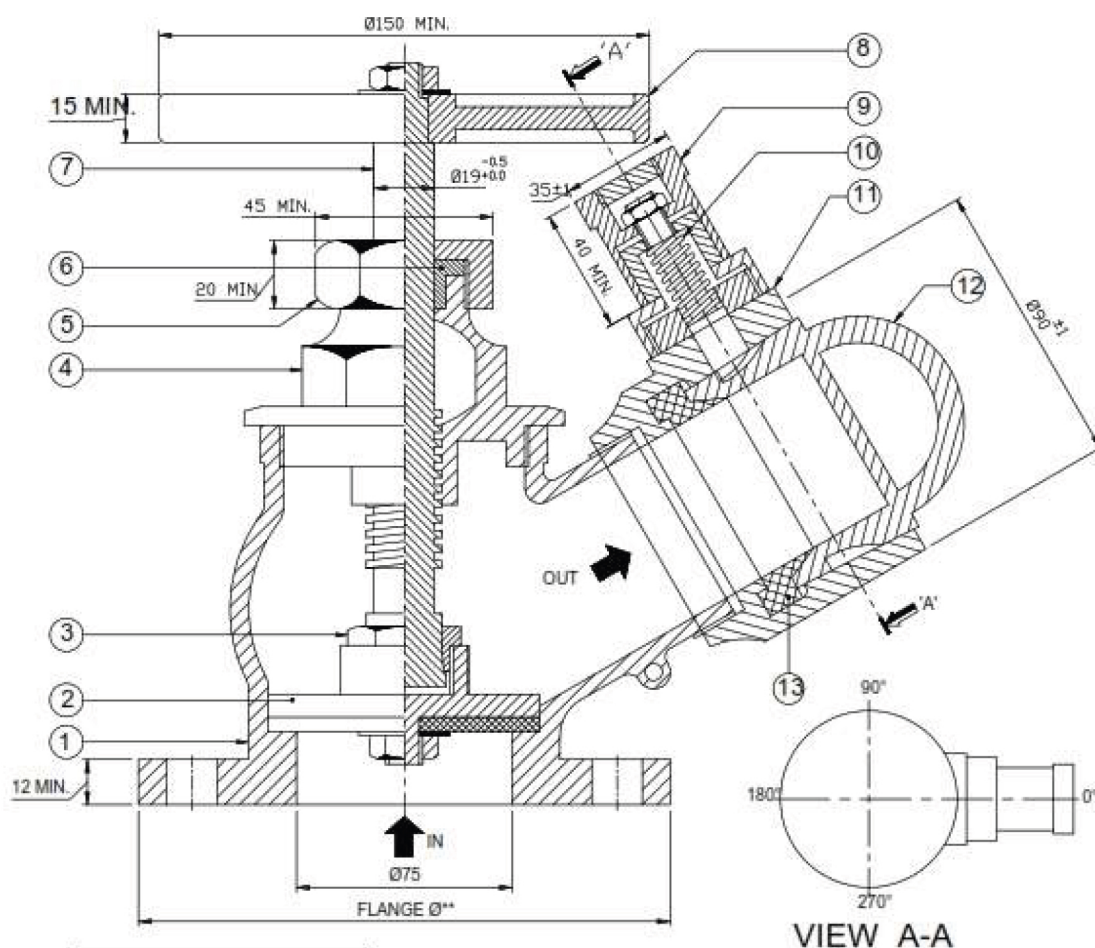
info@thadhanisafety.com



www.thadhanisafety.com

# TECHNICAL DATASHEET OF GUN METAL LANDING VALVE TYPE-A

## FIRE FIGHTING HYDRANT VALVE TYPE-A AS PER IS:5290



PART LIST	
SR. NO.	ITEM
1	BODY
2	STOP VALVE
3	CHECK NUT
4	BONNET CAP
5	GLAND NUT
6	GLAND
7	SPINDLE
8	HAND WHEEL
9	LUGS
10	SPRING
11	INST. FEMALE
12	BLANK CAP

FLANGE DIMENSIONS**				
STD. TABLE	FALANGE Ø	P.C.D.	NO. OF HOLES	HOLE Ø
IS 1538	200	160	4	19
ANSI B 16.5 150	190.5	152.4	4	19
AS PER CUSTOMER REQUIREMENT	**	**	**	**

### Note:

- 1) All Dimensions are in mm if not specified.
- 2) Tolerance where not specified shall be  $\pm 0.5$  MM.



**THADHANI**<sup>®</sup>  
The Experts in Safety... Since 1947

**J.THADHANI & CO.**

New #12/ Old #28, Stringers Street,  
Chennai - 600001, Tamilnadu, India.



044 - 4262 5223

info@thadhanisafety.com

www.thadhanisafety.com

# TECHNICAL DATASHEET OF GUN METAL LANDING VALVE TYPE-A

TECHNICAL DATASHEET FOR GUN METAL LANDING VALVE TYPE-A	
DATA SHEET NO. :	INTIME-TDS-01
CODE / STANDARD	IS 5290:1993 TYPE A
<b>MATERIAL OF CONSTRUCTION</b>	
Valve Body, Bonnet, Stop Valve,	GM to IS:318 Gr. LTB II
Instantious Female Outlet, Check Nut, Lug	GM to IS:318 Gr. LTB II
Spindle	Brass to IS:319 Spfn.
Hand Wheel	C.I. to IS:210 Spfn.
Washer	Type A of IS 937:1981 Spfn.
Spring	P.B. to IS 7608 Spfn.
Blank Cap	ABS Plastic
<b>INSPECTION &amp; TESTING</b>	
Dimensions	IS 5290:1993 Spfn.
Water Tightness Test	14 Kg/cm <sup>2</sup>
Hydro Pressure Test	21 Kg/cm <sup>2</sup>
Flow Test	Flow shall be not less than 900 LPM @ 7 Kg/cm <sup>2</sup>
<b>FINISH</b>	
Body	Fire Red to SHADE:536
Hand Wheel	Black to IS:2932 Spfn.
Parts	Polished
<b>APPROVAL</b>	
	BIS (ISI Marked)
<b>MARKING</b>	
Brand Name	
ISI Logo	Yes
Type of Valve	Type - A
Serial Nos.	Yes
Size	63mm
Year	Year of Manufacture
<b>COMPANION FLANGE</b>	As per customer requirement



**THADHANI**<sup>®</sup>  
The Experts in Safety... Since 1947

**J.THADHANI & CO.**

New #12/ Old #28, Stringers Street,  
Chennai - 600001, Tamilnadu, India.



044 - 4262 5223



info@thadhanisafety.com



www.thadhanisafety.com