

TECHNICAL DATA SHEET



IFR Coverall

PRODUCT INTRODUCTION

Flash Knight Inherently Flame Retardant (IFR) coveralls are a crucial element of personal protective equipment (PPE) designed to safeguard workers in environments where exposure to flash fire, flames and heat hazards is a risk. IFR coveralls are made from the fabric that have built-in flame-resistant properties that do not wash or wear out over time. This makes them a reliable choice for industries such as oil and gas, electrical utilities, firefighting, and other sectors where flash fire hazards are prevalent.



SPECIAL FEATURES

IFR

WASHABLE

LIGHT WEIGHT

FLEXIBLE

BREATHABLE

DURABLE

SKIN FRIENDLY

QUALITY PRODUCT

STYLE	FABRIC COMPOSITION	TRIM	MARKING
Coverall	100% Inherent Flame Retardant fabric (93% Meta-aramid, 5% Para-aramid, 2% Antistatic)±5%	100% FR Thread FR Velcro Snap Button FR Reflective Tape	Manufacturer Logo Model No. Fabric Composition Certification Size

FEATURES
Skin friendly fabric
Protection against flash fire
Protection against radiation heat
FR performance will never wash out
The hi-tech fabric will not cause any itchiness & stiffness

APPLICATIONS
Gas filtration
Daily Work Wear for Fireman / Firefighter
Plant shut down
Emergency response
Electrical Utilities

STORAGE
May be stored in the dark for upto 2 years
Do not store in direct/high heat or sunlight at this may distort the properties of the fabric
Can be stored and transported in their original cartons at ambient temperature

STORAGE
Single piece coverall with high collar
1" reflective tapes on chest, sleeves and below knee
2 chest pockets, 2 side pockets, 1pen pocket on sleeve
Front adjustment with 2way zipper and snap button & closure with flap

COLOUR	AVAILABLE SIZES	CLEANING	PACKING
Red	S, M, L, XL, XXL	Use light detergent for gentle wash	1 pc per packet

CERTIFICATIONS



2112

Standard on Flame-Resistant Clothing for Protection of Industrial Personnel Against Short-Duration Thermal Exposures from fire/flash fire thereby reducing the severity of burn injuries.



EN 1149-5

Test method for materials to be used in the production of protective clothing with electrostatic dissipation for preventing incendiary discharge.



EN ISO 11612

Specifies performance requirements for protective clothing made from flexible materials, which are designed to protect the wearer's body from heat and/or flame, describe in below chart:



EN ISO 11612:2015

CODE	INSPECTION CHARACTERISTIC	STANDARD	LEVELS
A	Limited Flame Spread, Surface Ignition	ISO 15025	1 (Lowest 1, Highest 3)
	Edge Ignition		2 (Lowest 1, Highest 3)
B	Convective Heat	ISO 9151	1 (Lowest 1, Highest 3)
C	Radiant Heat	ISO 6942	1 (Lowest 1, Highest 4)
F	Contact Heat	ISO 12127	1 (Lowest 1, Highest 3)



ASTM F1959

Test method used to calculate quantitative results (arc ratings) for FR fabrics. Arc ratings are a measure of thermal protection provided by the fabric in an arc flash.



The above mentioned goods meet the Human-Ecological requirements of the STANDARD 100 by Oeko-Tex presently in ANNEX 4 for products direct contact to skin.



EN 13688

Specifies general performance requirements for ergonomics, innocuousness, size designation, ageing, compatibility and marking of protective clothing and the information to be supplied by the manufacturer with the protective clothing.

INDUSTRY



Oil & Gas



Automobile



Windmill



Pharmaceutical



Cement



Metal



Automotive



Aerospace

WASHING INSTRUCTIONS

- Wash at maximum 60°C
- Use liquid detergents only
- Do not dry clean
- Wash in an industrial washer
- Never use chlorine bleach
- Do not iron
- Tumble dry at low heat



THADHANI®
The Experts in Safety... Since 1947

Coverall



IFR COVERALL SIZE CHART

SIZE	S	M	L	XL	XXL
TOTAL LENGTH	59" 1/2	60" 1/2	61" 1/2	62" 1/2	63" 1/2
CHEST ROUND	43"	44"	45"	46"	47"
SHOULDER	17" 1/2	18" 1/2	19" 1/2	20" 1/2	21" 1/2
SLEEVE LENGTH	23"	23" 1/2	24"	24" 1/2	25"

- 7 Pockets Design - Two chest pockets, one with flap & pencil slot on the left / Two side pockets / Two rear pockets, one with flap on the right / Tool pocket on the right leg
- Two way heavy duty metallic zipper, snap button and storm flap closure
- Fully double stitched and bar tacked stress points with FR thread
- Action back allowing maximum body movement
- Full sleeves with (ADDITIONAL)adjustable cuffs
- Permanent sewn crease line
- Snap button neck closure with hanging hook on collar
- Concealed elastic waist on backside
- Colour Fastness 4-5 and Easy care
- All metal parts are fully concealed

COMPOSITION

- Fabric : RWW®
Inherent Flame Retardant and Anti-static (Aramid/Modacrylic/Anti-Static)
- Fabric weight : 180 GSM or 5.3 OZ



THADHANI®
The Experts in Safety... Since 1947

DESIGN

SPECIFICATIONS

Pen pocket with 2 slot

Two chest pockets
Left chest pocket with flap cover, pencil slot and snap button locked.
Right chest pocket with snap button lock without flap cover.

Two way heavy duty YKK zipper, stormflap & concealed metallic snap button closure

1 inch reflective tape

Elastic waist on the back

rear pockets
Right pocket with flap cover & snap button lock.
Left pocket with snap button lock without flap cover.

1 inch FR reflective tape

COLOURS



CARE INSTRUCTIONS:

Protective Garments Should Be Cleaned Regularly, as Per Recommended Instructions. Always Wash Your Flame Retardant Ppe Separately To Avoid Some Migration Of Flammable Loose Fibers Or Components. After Cleaning The Garment, Please Inspect Before Re-use.

WASH CARE INSTRUCTIONS

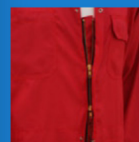
Wash At 60°C, Do Not Use Detergents Containing Phosphate Or Chlorine. Tumble Dry Allowed. Use Dry Cleaning Agent Other Than Trichloroethylene. Iron At Medium Setting. Do Not Bleach, Do Not Use Acids When Rinsing.



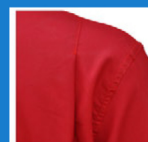
SIZE CHART

S	M	L	XL	2XL	3XL	4XL	5XL	6XL
36-38	40-42	44-46	48-50	52-54	56-58	60-62	64-66	68-70

COMPONENTS



Two way heavy duty metallic zipper, snap button & storm flap closure



Action back allowing maximum body movement



Concealed elastic waist on backside.

