

**Honeywell**



## **AreaRAE Plus** **Wireless, transportable** **area monitor**

Visibility on more gas threats than ever — all in one versatile, easy-to-use device.



**THADHANI**<sup>®</sup>  
*The Experts in Safety...* **Since 1947**

**J.THADHANI & CO.**

New #12/ Old #28, Stringers Street,  
Chennai - 600001, Tamilnadu, India.



044 - 4262 5223



[info@thadhanisafety.com](mailto:info@thadhanisafety.com)



[www.thadhanisafety.com](http://www.thadhanisafety.com)



# Wireless, transportable multi threat area monitoring for industrial safety

The AreaRAE Plus can simultaneously detect toxic and combustible gases, Volatile Organic Compounds (VOCs) and meteorological factors that affect the speed and direction of the gas — all from one versatile, transportable area monitor. It also works with Honeywell's remote monitoring software, so you can see the real-time threat readings and location of each AreaRAE Plus — and make faster, more informed safety decisions.







## Multiple threats. Multiple applications

AreaRAE Plus is designed for the needs of:

- Industrial first responders and fire brigades
- Health, safety and environmental managers
- Plant and operations managers

Whether you need to monitor a fence line, protect workers during high-risk equipment maintenance or establish a perimeter during a hazmat event, count on the AreaRAE Plus to alert you to threats — with audible and visual alarms — so you can ensure safety.

## Remote monitoring from a safe location

In addition to providing gas status on the scene, AreaRAE Plus sends gas readings to real-time monitoring software. So even if you're not right next to the device, you can see which AreaRAE Plus is in alarm and at which location — all in an easy-to-use, map-based display that's accessible from any computer with an internet connection.

Don't have an internet connection? Use our ruggedized military-spec laptop as a turnkey host, enabling you to monitor gas readings from a safe position up to 2 miles / 3 kilometers away.

With remote monitoring, you have the real-time data you need to plan the right response and quickly disseminate information.



## Pioneered by RAE Systems, continued by Honeywell

AreaRAE Plus builds on the legacy expertise of Honeywell RAE Systems, which was one of the first to market transportable, multi-threat area monitors. These monitors have been used for presidential inaugurations, world sports events and other applications where it's critical to maintain visibility on gas threats.

As the latest generation of the AreaRAE platform, AreaRAE Plus now carries the Honeywell name — a reminder that your monitor comes from the global leader in safety technology and protective equipment. Hailing from the thousands of AreaRAE monitors in use throughout the world, it features proven, reliable monitoring technology that you can trust.





# Multiple sensors in a single device

flexibility for changing needs



With AreaRAE Plus, you don't have to choose one sensor at the expense of another. Instead, the monitor is built for versatility, enabling you to monitor multiple threats all at the same time.

You get:



## Up to 7 sensors for toxic and combustible gas

AreaRAE Plus comes with your choice of up to seven sensors. Need to monitor a confined space? Respond to a toxic chemical spill? You have the flexibility to switch out the sensors whenever your needs change.

Choose from more than 20 4R+ sensors for toxic gases, oxygen and multiple combustible gases at the lower explosive limit (LEL). Need to monitor for a gas that's not in your standard configuration? With seven sensor slots available, you have the versatility you need.

## Do you have MultiRAE personal gas monitors?

AreaRAE Pro and MultiRAE use the same family of interchangeable 4R+ gas sensors.

That means you need only 1 sensor inventory for both transportable area monitoring and personal monitoring — with the flexibility to switch sensors in and out

for different gases as your needs change. Management of your gas detection just got more efficient.

And they have the same user interface.

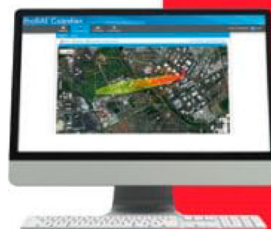
So you can have the same hassle-free experience across your area monitors and personal monitors. And since you only have to learn the interface once, it also means less training time and personal monitors — plus minimized training time.



MultiRAE

## A PID for volatile organic compounds

AreaRAE Plus also comes with a 7R+ photoionization detector (PID) for monitoring VOCs at parts per million. With built-in compensation for temperature and humidity, this new PID sensor responds to chemicals quickly and accurately.



## Modeling made easy with ALOHA®.

Real-time Toxic plume dispersion can be modeled using data from the RAEMet sensor. Honeywell real-time monitoring software interfaces with ALOHA®, the Hazard Modeling program jointly developed by the US EPA and the NOAA.

Now you can use ALOHA® to model a gas cloud, fire or explosion — and then plot a threat zone — all from the same easy interface that you use to monitor other readings from your AreaRAE Plus.



## A new meteorological sensor for tracking toxic plumes

Want to predict the spread of a toxic gas leak at your fence line, or determine the direction and dispersion so you can protect nearby populations?

With AreaRAE Plus, there's no need for a cumbersome, expensive portable weather station. Instead, use the RAEMet sensor located on top of the AreaRAE Plus, to measure:

- Wind speed
- Wind direction
- Temperature
- Relative humidity

With high sensitivity and a built-in electronic compass, the RAEMet sensor measures the data you need to determine where to evacuate, what roads to close and how to prioritize actions.



*RAEMet sensor sends data to real-time monitoring software, where incident commander is tracking a plume.*

## Flexible applications to protect your people, plant and community

AreaRAE Plus, combined with Honeywell's remote monitoring software, gives you real-time gas awareness in many different kinds of hazardous situations. **So if there's an atmospheric hazard, you can rest assured you'll know about it so you can make faster, smarter safety decisions.**

### Emergency response

Need to respond to a hazmat release in your plant? Investigate a gas leak? Quickly establish a perimeter after a chemical spill? When your first responders take an AreaRAE Plus to the scene, they can monitor the area for dangerous gases — and, thanks to Honeywell's remote monitoring software, they'll have confidence that someone has their back and can send additional help if needed quickly and accurately.

Even more, our **Rapid Deployment Kit** makes it easy for your teams to get up and running with wireless area monitoring — in less than five minutes. The kit provides a mobile command center and instant safety awareness.

Each kit includes:

- 4 AreaRAE Plus monitors
- Spare batteries
- Charging station
- Turnkey laptop with software for remote monitoring from up to 2 miles / 3 kilometers — or via the internet from any location



**Grab and go.**

*Keep the rapid deployment kit on your first responders' truck. So when they're ready to go, their area monitors will be too.*



# Flexible applications



## CLEARING A CONFINED SPACE FOR ENTRY\*

Do you have work scheduled for a tank, vat or other confined space? In the days leading up to the project, place an AreaRAE Plus outside the space; then use the real-time monitoring software to keep an eye on any changes in gas hazards, such as shifting levels of hydrogen sulfide or oxygen, which can be affected by ventilation and wind.

With the help of AreaRAE Plus, you can ensure the safety of confined spaces before your crews go to work.



## WASTEWATER PIPELINE REHABILITATION

If you have underground crews working on water pipelines, how will they know whether they're in the path of dangerous gases moving through the tunnel? Your team leader can use AreaRAE Plus monitors, stationed at manhole access points throughout the tunnel, to detect ammonia, chlorine, VOCs and other gas hazards.

So if there's an upstream gas that threatens your workers, the software will alert team leaders immediately so they can take action.



## MAINTENANCE TURNAROUNDS

Do you have workers performing high-risk equipment maintenance during a shutdown? Going into parts of the plant that may be unfamiliar to them? In addition to equipping your workers with personal gas detectors, use AreaRAE Plus to monitor the gas safety of the entire area — or multiple areas at multiple sites. Give workers an additional layer of security by remotely monitoring real-time readings on threats like:

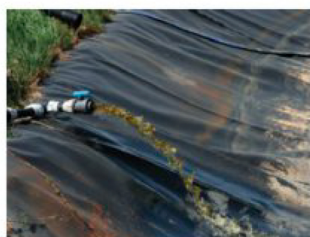
- **Oxygen deprivation**
- **Explosive atmosphere**
- **Exposure to Volatile Organic Compounds, hydrogen sulfide or other toxics gases**



## FENCE LINE MONITORING

In addition to rapid deployment for temporary gas monitoring, AreaRAE Plus can be used for fixed, long-term applications. Need to continually monitor the perimeter of your plant for gas emissions, ensuring the safety of your surrounding community? Just position AreaRAE Plus detectors at the fence line; then use the software to monitor real-time readings from up to two miles away — so you can ensure safety while managing your liability and corporate reputation.

Whenever an AreaRAE Plus goes into alarm, the software will give you an instant alert so you can plan the right response. And if you do have a dangerous gas emission, use the RAEMet meteorological sensor to determine the direction and speed of the plume so you can manage the threat.



## SITE REMEDIATION

During the remediation of landfills and other contaminated sites, you could encounter any number of pollutants in the soil or in abandoned underground pipes or tanks — such as benzene, nitrogen dioxide, hydrogen sulfide, sulfur dioxide and other hazards.

AreaRAE Plus can monitor the scene for dangerous gases, while sending real-time readings to the software for remote monitoring from a safe location. And when you're not sure what you're going to uncover, AreaRAE Plus gives you the flexibility to choose from more than 20 sensors that you can easily switch out for different hazards.



## FUMIGATION, EXCAVATION AND OTHER ENVIRONMENTAL LIABILITIES

If you're fumigating timber or buildings, how can you ensure that gases from the fumigation area don't escape into the surrounding environment? Or if you're drilling, blasting and using various explosives for excavation or mining, how can you prevent residual gases from affecting nearby communities?

Use AreaRAE Plus on the perimeter, while using the software to monitor real-time gas readings from a safe location — so you can protect your community, your reputation and your liability risks. And if a gas does escape from your worksite, use the RAEMet sensor to track the plume and manage the threat.



# Engineered for ease and flexibility

Despite its sophisticated multi-threat detection, AreaRAE Plus is easy to use — with an intuitive, user-friendly interface that's translatable into multiple languages. Just turn it on and go. It also has big buttons that are easy to operate with industrial gloves.

That ease of use also extends to the remote monitoring software, which displays the real-time gas readings and location of each AreaRAE Plus — all in the map-based display at your fingertips.



## With AreaRAE Plus, you can also count on:



### A MONITOR THAT'S EASY TO HEAR AND SEE

AreaRAE Plus has a 108-decibel alarm for local annunciation, so when it goes off, you'll hear it — even in noisy environments. It also has wraparound LEDs for maximum visibility, even in sunlight. Plus 3 relays for connection to external strobes, horns or other triggers.



### PC-BASED SOFTWARE FOR EASY CONFIGURATION

Want to change the alarm settings?

To configure the monitor, simply connect it via USB cable to a laptop running our configuration software — no special cable required.



### WIRELESS FLEXIBILITY FOR REMOTE MONITORING

In addition to supporting long-distance gas monitoring from up to 2 miles / 3 kilometers away, AreaRAE Plus comes with a built-in mesh modem to facilitate short-range monitoring — no external router required.

And if you have other portable wireless detectors from Honeywell RAE Systems, use the AreaRAE Plus as a host for transmitting the data of up to 8 devices to the real-time monitoring software. That means less equipment and quicker startup. For even more flexibility, AreaRAE Plus can also be configured with a Wi-Fi modem.



### FLEXIBLE POWER FOR SHORT- AND LONG-TERM DEPLOYMENTS

AreaRAE Plus has a rechargeable lithium-ion battery that delivers 20 hours of runtime, and you can use the real-time monitoring software to keep an eye on the battery life of each detector. Battery running low? Simply switch it out or, as another option, replace it with a rechargeable battery. For around-the-clock deployments, use the AreaRAE Plus with A/C power or with our SolarRAE, an all-weather, solar-powered enclosure.

### Coming soon:

#### Configure the monitor with a smartphone.

Honeywell is adding Bluetooth Low Energy (BLE) technology to multiple products, so you'll soon be able to configure the AreaRAE Plus using a smartphone app. It's another way Honeywell is changing your experience with gas detection.





# Part of ConneXt Safety Solutions

ConneXt Safety Solutions come in several varieties, enabling you to remotely monitor safety, productivity and compliance – from a lone worker to an entire plant.



## ConneXt Loneworker

Remote workers are only a click away



## ConneXt Pack

Turnkey kit for small teams



## ConneXt Plus

Configured system for projects up to several days



## ConneXt Pro

Enterprise solution for 24/7 monitoring



## ConneXt Safety Solutions are part of IIoT by Honeywell

Connecting your people, processes and assets to transform operations

## Honeywell Gas Detection

Honeywell is able to provide gas detection solutions to meet the requirements of all applications and industries. Contact us in the following ways: