

Technical Specification Sheet

SNAP ON CIRCUIT BREAKER LOCKOUT

Material: ABS

Locking hole: 1 number

Accepts shackle up to: 7mm

Weight: 10gm

Size: Length 55mm, Width 20mm Depth 10mm

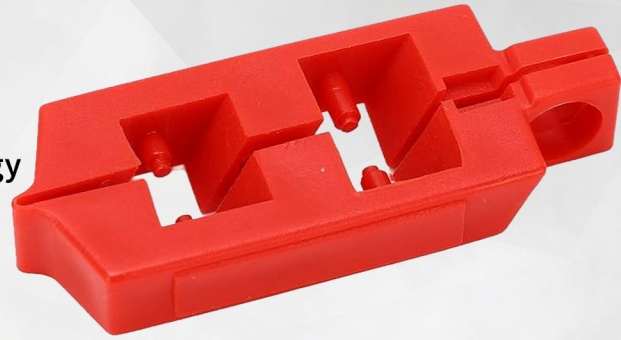
Inside bended pins: 5.1mm

Inner rectangle 1 size: 14.85mm X 9.8mm

Inner rectangle 2 size: 12mm X 9 mm

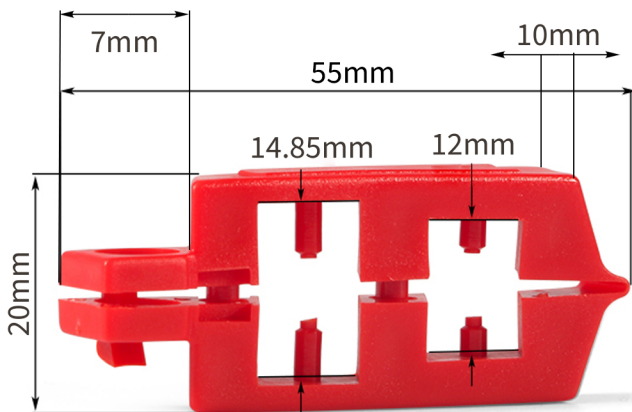
Application: This device is suitable for 120V circuit breaker. Circuit Breaker Lockout is used to isolate the electrical energy to procure the electrical hazardous situation, and fits on different sizes of switch tongues with double cavity spaces. Durable and east to install

For installation verify that circuit breaker has holes in its operator switch, now place the lockout device in OFF position over the circuit breaker using the small rectangular cavity, squeeze the device closed and make sure that pins are fully inserted in the holes and unable to switch on, now insert the padlock and tog.



LS - BR32

Intallation



ITEM CODE	DESCRIPTION	WEIGHT
LS-BR32	SNAP ON CIRCUIT BREAKER LOCKOUT	10GM



THADHANI[®]
The Experts in Safety... Since 1947

J.THADHANI & CO.

New #12/ Old #28, Stringers Street,
Chennai - 600001, Tamilnadu, India.



044 - 4262 5223



info@thadhanisafety.com



www.thadhanisafety.com