

Technical Specification Sheet

GROUP CIRCUIT BREAKER LOCKOUT

Material: ABS

Locking holes: 07 on both base

Accepts shackle up to: 7.6/8.5mm (oval shape)
space left above rod for lockout.

Weight: 60gm

Sticky base: Length 100.86mm x

Width 19.85mm x Height 26.80mm

Barrier rod length: 196mm

Teeth on base: length 2.4mm, width 2.9mm

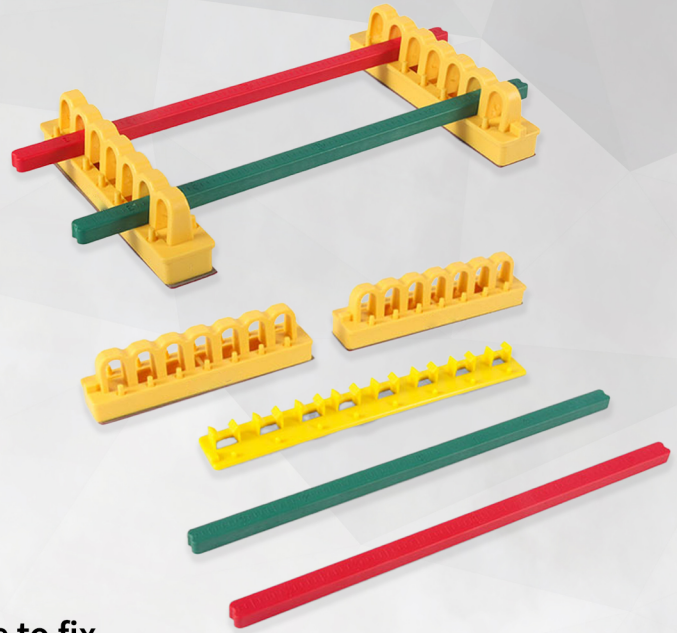
Number of holes in rod: 51

Number of teeth on base: 7 both side

Two Sticky base along with high quality 3M adhesive to fix it rigidly on two sides near circuit breaker along with two rod RED/GREEN with holes at the bottom.

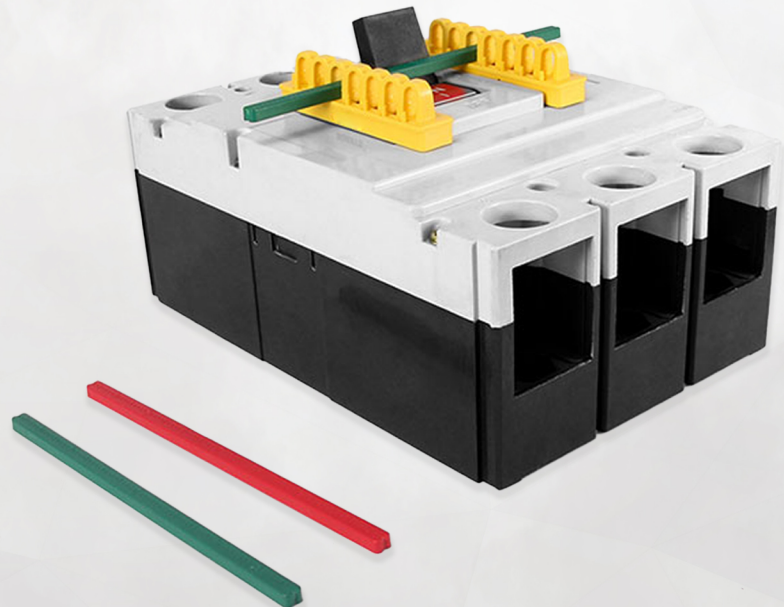
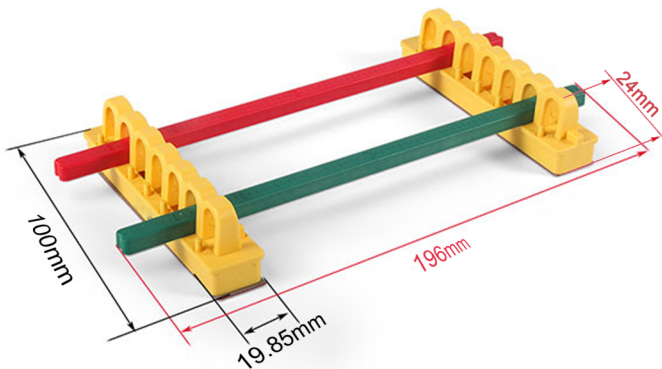
Device is one time use and can lockout multiple circuit breakers at a time within certain length.

RED & Green rods provided to select between LOCKED OFF and LOCKED ON position.



LS - BR27

Intallation



ITEM CODE	DESCRIPTION	WEIGHT
LS-BR27	CBL, PER SET	18GM



THADHANI[®]
The Experts in Safety... Since 1947

J.THADHANI & CO.

New #12/ Old #28, Stringers Street,
Chennai - 600001, Tamilnadu, India.



044 - 4262 5223

info@thadhanisafety.com

www.thadhanisafety.com