

Technical Specification Sheet

MINIATURE CIRCUIT BREAKER LOCKOUT TIE BAR

Material: ABS + metallic strip

Locking holes: 02

Accepts shackle up to: 7.5mm

Weight: 19.5gm

Bolt complete length: 47.5mm, thickness 4.7mm

Front metallic strip: I length 9mm

II Width 3.25mm above, 6.44mm lower

III Thickness 0.54mm.

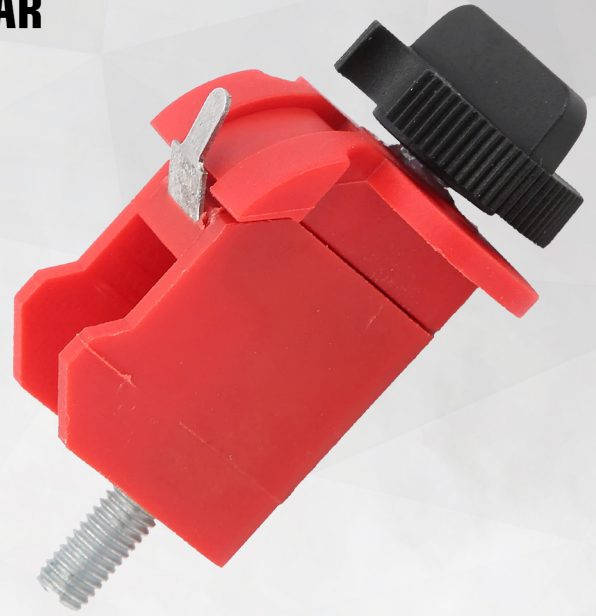
Size: I body height with bolt 59mm, without bolt 45.5mm,

II body width 12.7mm

No-Tool require for installation.

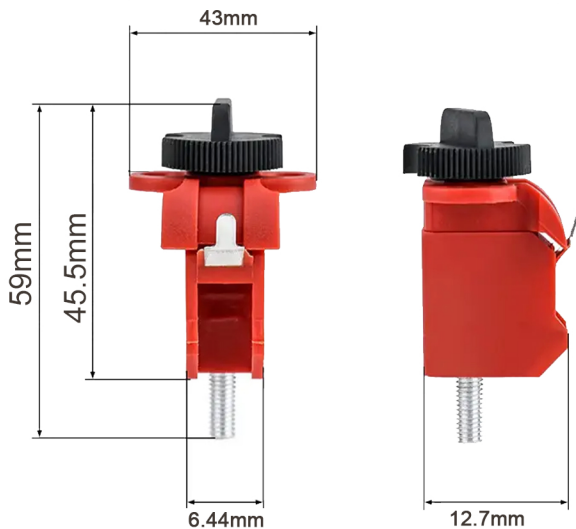
Adjustable thumb wheel provided at the back to adjust & fix the strip in between the space of MCB.

Fits on larger or multi-pole circuit breaker.



LS - BR 13

Intallation



ITEM CODE	DESCRIPTION	WEIGHT
LS-BR13	TIE BAR	19.5 GM



THADHANI[®]
The Experts in Safety... Since 1947

J.THADHANI & CO.

New #12/ Old #28, Stringers Street,
Chennai - 600001, Tamilnadu, India.



044 - 4262 5223



info@thadhanisafety.com



www.thadhanisafety.com